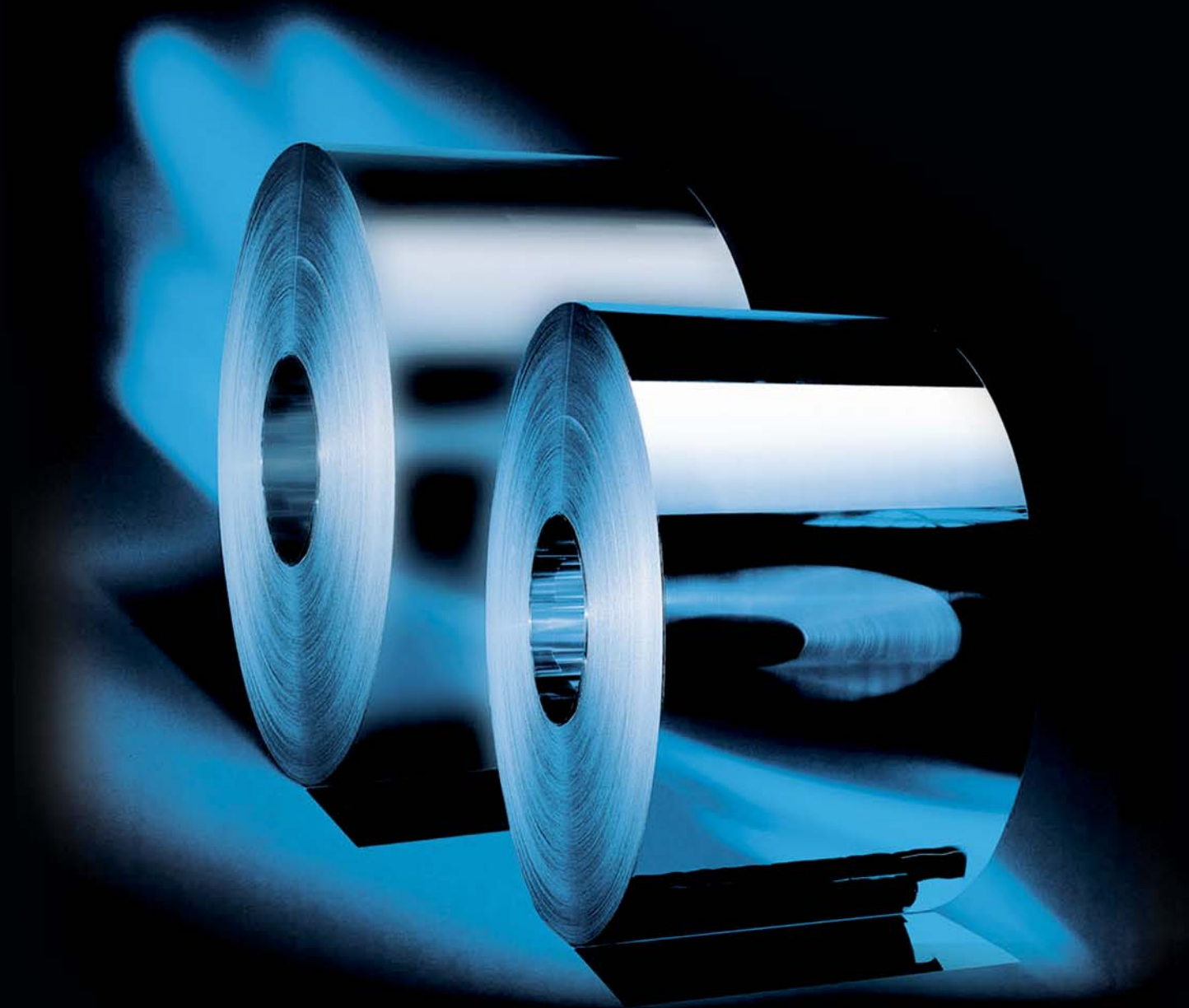
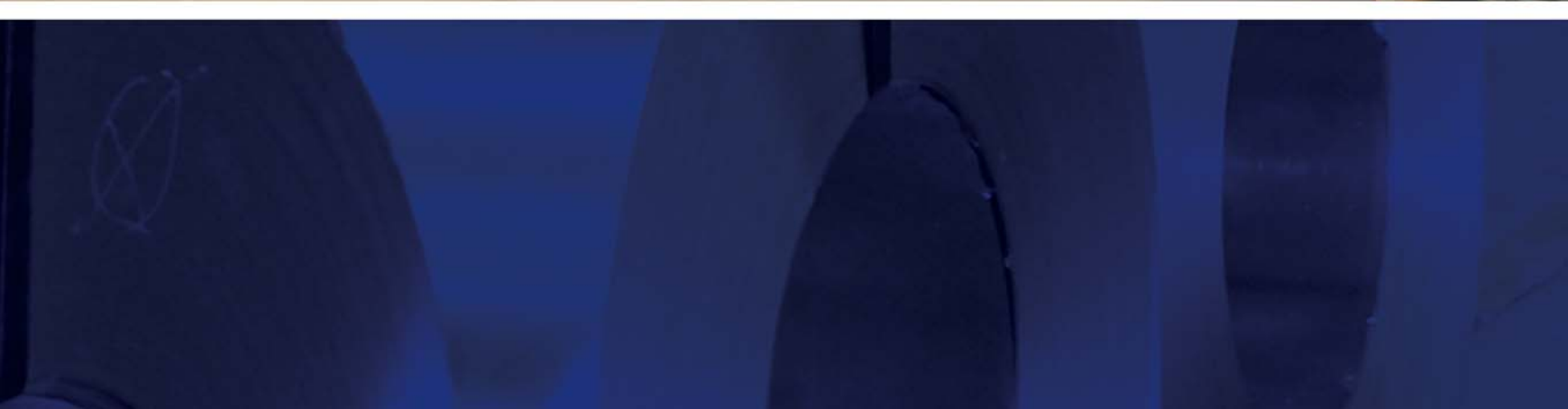




**KMC**  
STEEL SERVICE CENTER



**KMCGROUP**



## About

Our company was initially founded in Kayseri in 1987 as a local company, and KMC has become one of the leading companies today in Turkey.

KMC is one of the largest stockist and steel service center in Turkey which keep 100.000 mt of flat carbon steel products in its stocks. We are specialized in cutting and slitting Cold Rolled Coil, Hot Rolled Coil, Hot Rolled Plate, Hot Dip Galvanized, Prepainted Galvanized, Aluminised, Aluzinc products. Besides, Flat Iron, Wrought Iron, Angles, Corrugated sheets and chequered materials are made addition to our product range.

KMC provide services to all regions of Turkey with its facilities in the ports of Turkey like Gebze - Diliskelesi - İzmir - Iskenderun and in Kayseri. KMC owns indoor areas of 100.000 sqm over a total area of 150.000 sqm all around Turkey.

Our company is capable of supplying materials to urgent demands of customers with our processing lines in Gebze, Izmir, and with our warehouses in Diliskelesi and Iskenderun.

KMC has a bonded Warehouse in Gebze Facility in order to serve to Export Markets and also for Exporter Customers in Turkey. KMC is the sole independent company which is capable of stocking and processing all the CRC-HRC-HDG Sheet-PPGI and Aluminized products in 4 different regions of Turkey.

On behalf of KMC, we have focused on to Export market since 2010 and by today Exportation is consist of 50% of total sales into more than 66 countries. After next year we believe that Export share in total sales will be higher than 60-70% with the help of new markets.



## Cut to Length Lines

### Alcos Cold Rolled Cut To Length & Slitting Line

Min and Max thickness : 0,25 - 2,00 mm  
 Max coil width : 1600 mm  
 Max coil weight : 30 tons



### Hot Rolled Cut To Length Line 4-18

Min and Max thickness : 4,00 - 18,00 mm  
 Max coil width : 1600 mm  
 Max coil weight : 40 tons



### Hot Rolled Cut To Length Line 1-6

Min and Max thickness : 0,70 - 6,00 mm  
 Max coil width : 2000 mm  
 Max coil weight : 35 tons



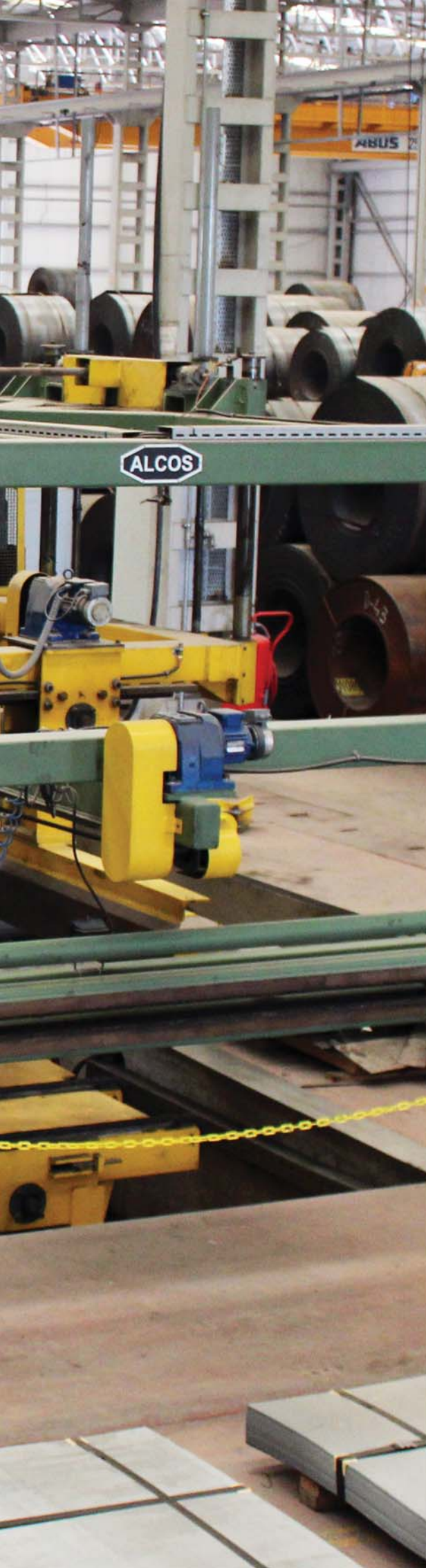
### Hot Rolled Cut To Length Line 1-4

Min and Max thickness : 1,00 - 4,00 mm  
 Max coil width : 1500 mm  
 Max coil weight : 25 tons



### Cold Rolled Cut To Length Line Staps

Min and Max thickness : 0,30 - 2,00 mm  
 Max coil width : 1600 mm  
 Max coil weight : 10 tons





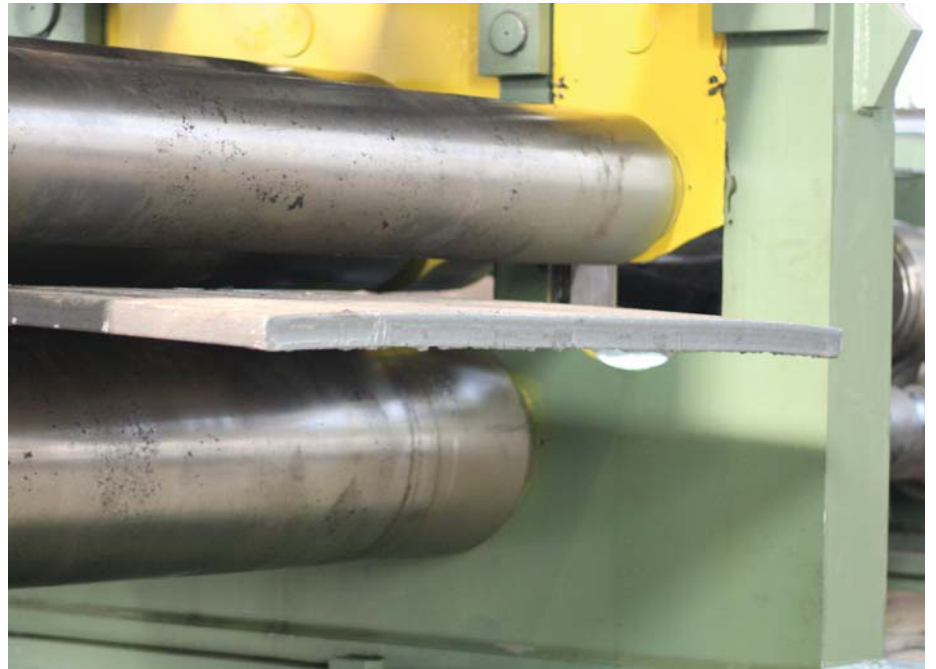
## Cut to Length Lines

### Hot Rolled Cut To Length Line 15-50

Min and Max thickness : 15,00 - 50,00 mm

Max coil width : 1600 mm

Max coil weight : 30 tons









**Slitting Line - 1**

Min and Max thickness : 0,50 - 4,00 mm  
Max coil width : 2150 mm  
Max coil weight : 40 tons



**Slitting Line - 2**

Min and Max thickness : 0,25 - 3,00 mm  
Max coil width : 2000 mm  
Max coil weight : 25 tons



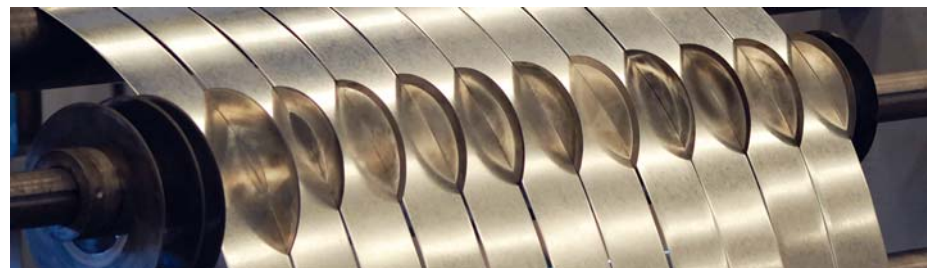
**Slitting Line - 3**

Min and Max thickness : 0,30 - 3,00 mm  
Max coil width : 1600 mm  
Max coil weight : 15 tons



**Slitting Line - 4**

Min and Max thickness : 0,50 - 4,50 mm  
Max coil width : 1600 mm  
Max coil weight : 28 tons





## Corrugated Line

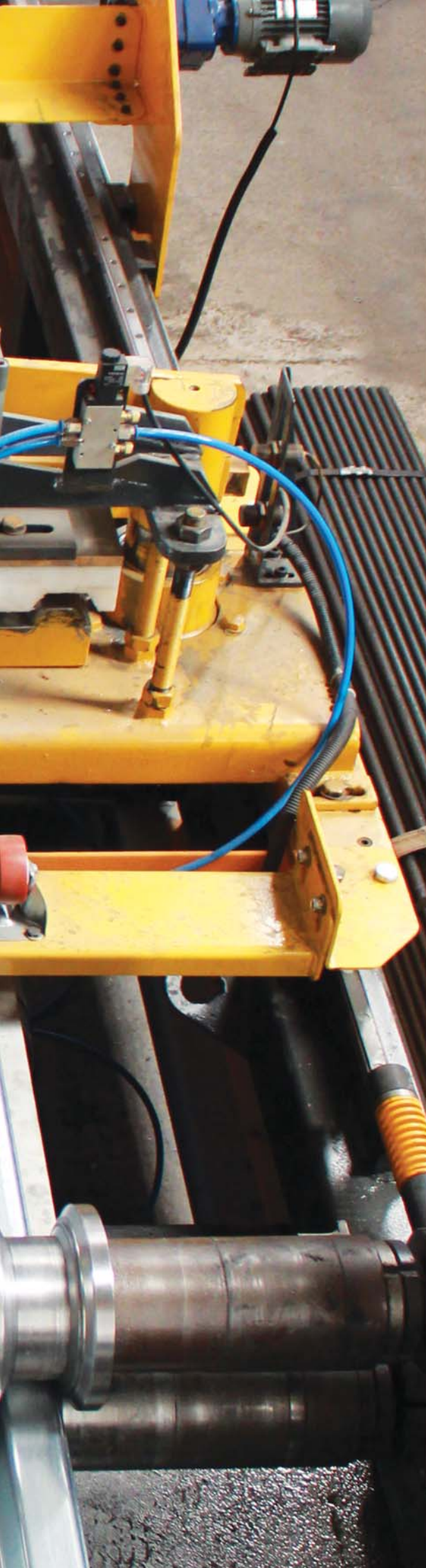
### Trapeze Line

Min and Max thickness : 0,40 - 1,20 mm

Max coil width : 1250 mm

Form : 27/200

Max coil weight : 10 tons





KMC steel service center

ERBAG  
SWL 25 TON  
(20000 kg) 2004

YALIK

YALIK



## Hot Rolled Plates

We keep very large plate stocks in all grades and thickness from 6,00 mm up to 250 mm used by machine Industry, Construction, Shipbuilding, etc... Also, we oxycut the plates by desirable dimensions according to our customer requests.



## Oxy Cutting Line

Min and Max thickness : 6,00 – 50,00 mm  
Max coil width : 1000 mm





6000  
0

76

57

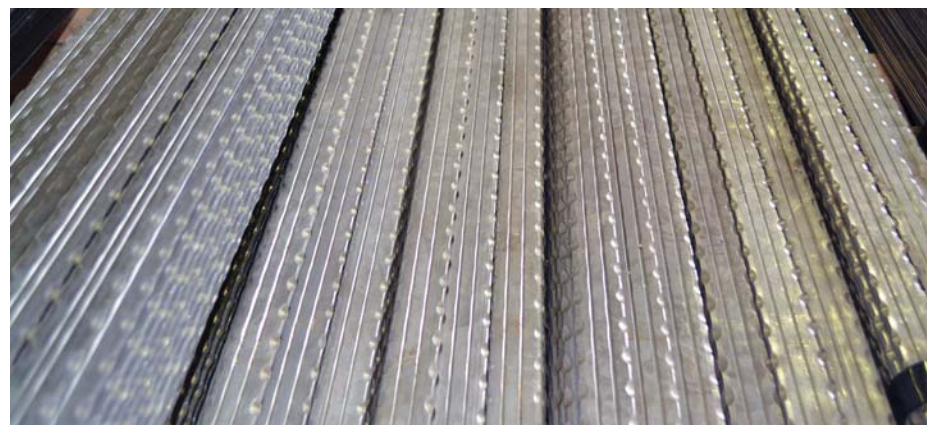
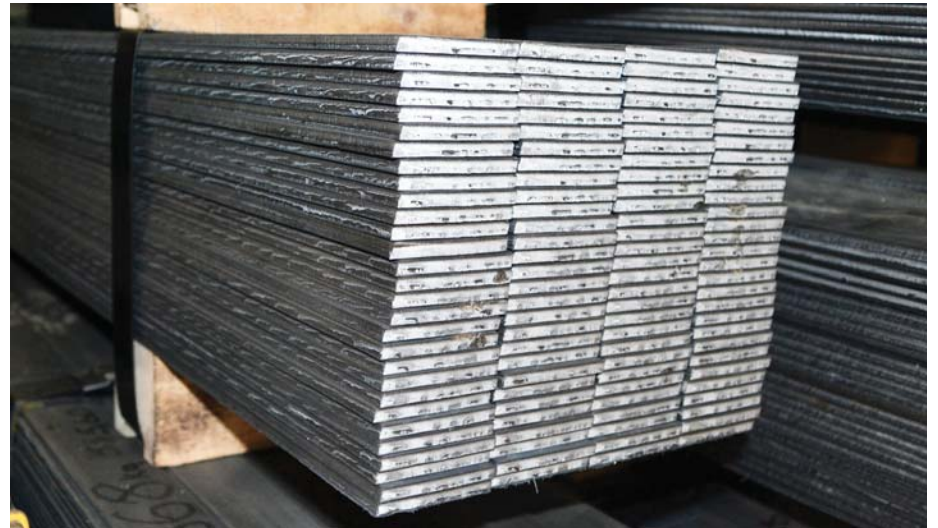
57

106

1036 K9

## Flat Bar - Wrought Iron Products

Min and Max. thickness : 2,50 - 15,00 mm  
Min. and Max. width : 20,00 - 150,00 mm



## Package Number - 1

In this packing form, all materials are wrapped with waterproof KMC logo papers and covered by metal envelope.

It is used for Cold rolled, Hot dip galvanised and other valuable products.

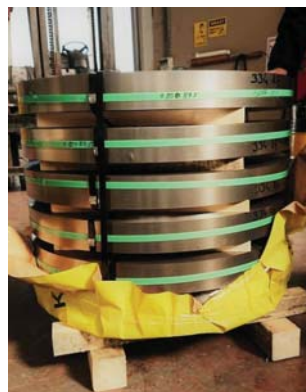
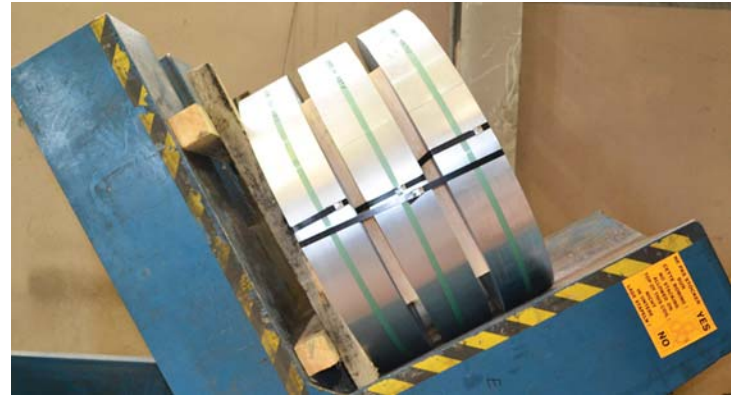


## Package Number - 2

Cold rolled P&O and Galvanised strips are packed with wooden sticks between the small coils.

Afterwards it is covered by waterproof paper and wrapped with steel hoops.

Then it is completed the outside with hardboard carton in order to provide better protection against weather conditions.







### Package Number - 3

Coils are packed with waterproof paper and wrapped with metal hoops.

Additionally, we use harboard cartoon protection for cold rolled and galvanise materials.



### Package Number - 4

We use pallets upto 3 mm thickness and covered with waterproof paper upto 3000 mm length.

We use woods sticks for materials thicker than 3 mm and also be packed with waterproof paper upto 3000 mm length sheets





**KMC**  
STEEL SERVICE CENTER

**KMC**  
STEEL SERVICE CENTER

C0221201 B  
101-KX

S-118

S-14

S-14-C

S-11



**KMCGROUP**

THE PROFILE OF THE WORLD



**ER-Bİ**



METAL GELİŞTİRME ENDÜSTRİSİ



STEEL SERVICE CENTER

**ZEREN**  
GAYRİMENKUL





## KMCGROUP

### KMC HEAD OFFICE

Organize Sanayi Bölgesi 12 Cad. No:55 Kayseri / TÜRKİYE

T: +90 352 322 08 80 pbx - F: +90 352 322 08 87

[www.kmcgroup.com.tr](http://www.kmcgroup.com.tr)



## KMC STEEL SERVICE CENTER

### KMC GEBZE MILL

Barış Mah. 1805/3 Sk. No:10 Gebze - Kocaeli / TÜRKİYE

T: +90 262 644 12 34 pbx - F: +90 262 643 77 55

E: [info@kmc.com.tr](mailto:info@kmc.com.tr) - [export@kmc.com.tr](mailto:export@kmc.com.tr)

[www.kmc.com.tr](http://www.kmc.com.tr)



[kmc\\_metal](https://twitter.com/kmc_metal)



[kayserimetalcenter](https://www.facebook.com/kayserimetalcenter)



[kmc\\_metal](https://www.instagram.com/kmc_metal)



[kmcgroup](https://www.linkedin.com/company/kmcgroup)